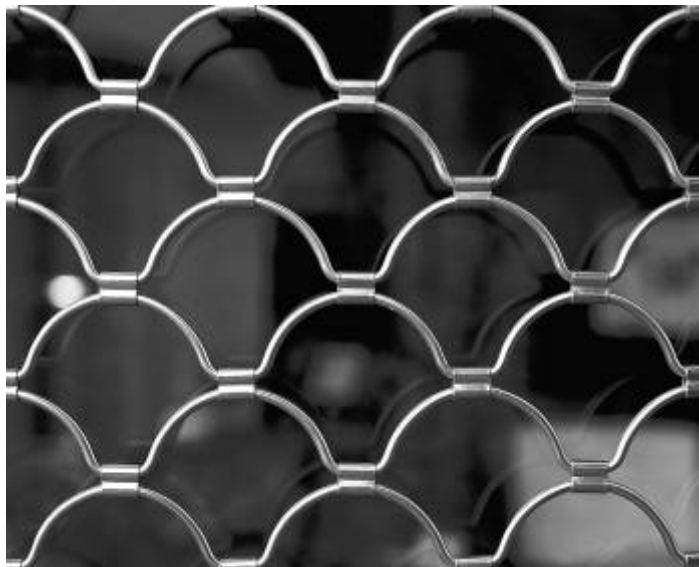


# Armourshield Roller Grille

High Security – Maximum Visibility



*A tough grille with an elegant, open look and feel to it –  
HVP's Armourshield grilles are ideal for bars, reception counters and shopfronts*

The Armourshield is a continental style roller grille that is back in demand. Its tough steel rods make it a secure barrier, whilst maintaining a great sense of openness.

The combination of high security and maximum amount of open space make this grille ideal for shop fronts (preferred by most local authorities). Ideally the grille is placed behind glazing, where it forms a double barrier with the glass. An external fit is not recommended for high risk areas.

At bars, serveries and reception counters the Armourshield creates an attractive and securely locked barrier with maximum visibility.

Available in two thicknesses – standard 6mm steel or 8mm steel for higher levels of security.

- **Shop fronts** - Maximum vision for shop displays
- **Bars and serveries** - Attractive and secure barrier with maximum visibility
- **Reception counters** - Elegant grille, providing full natural light

- **Maximum vision**
- **Full natural light**
- **Elegant and strong**

Visit [www.hvpshutters.co.uk](http://www.hvpshutters.co.uk) for more information and CAD-friendly drawings

Telephone 01392 270218 | Fax 01392 278548 | Email [info@hvpshutters.co.uk](mailto:info@hvpshutters.co.uk)



# Technical Specification

## Armourshield Roller Grille

Visit [www.hvpshutters.co.uk](http://www.hvpshutters.co.uk) for downloadable CAD drawings and full specification text

### Construction:

Manufactured from 6mm or 8mm solid steel bars, press formed into the grille profile. Grille bars locked together with pressed steel clips; Double extruded aluminium bottom rail with weatherseal (6mm grille) or roll formed steel bottom rail (8mm grille); Extruded aluminium guides with weather seals: 53mm x 22mm (6mm grille) or 75mm x 27mm (8mm grille).

### Operation:

Manual push up/pull down operation or electric operation by integral tubular motor with manual override facility. Safety brake fitted when required to comply with BS EN 13241:2003-1 (HVP Security Shutters' general policy is to fit a safety brake unless specified otherwise).

### Locking Options:

Bottom rail central key lock, Guide pin locks, or Ground padlocking system. Electrically operated grilles are generally self locking.

### Finish:

Zinc plated in silver or gold colour, Polyester Powder Coated, or stainless steel (8mm grille only)

### Maximum Sizes:

manual: 2500mmW x 2500mmH (max. 6m<sup>2</sup>)  
electric: 5000mmW x 3000mmH (max. 9m<sup>2</sup>)

### Size Guide:

Shutter Height A	Typical Dim B
Up to 1600mmH	205mm
Up to 2200mmH	250mm
Up to 3000mmH	300mm

We have done our best to ensure the information on this brochure was accurate at the time of printing. We do, however, reserve the right to change specification without prior notice.

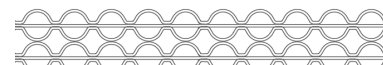
### Grille Styles



Style A - Standard Shell



Style B - Standard Ring



Style C - Ring with intermediate reinforcing

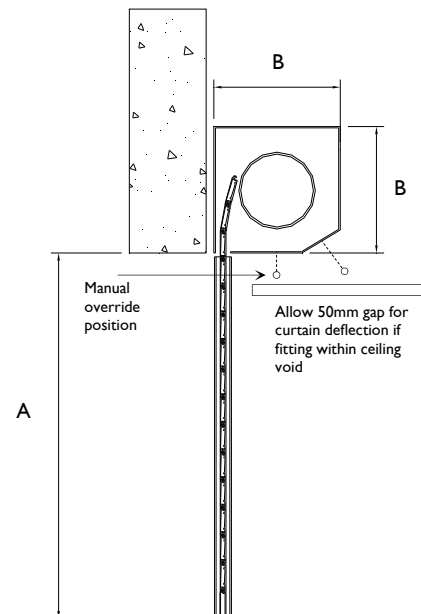


Style D - Ring with full reinforcing

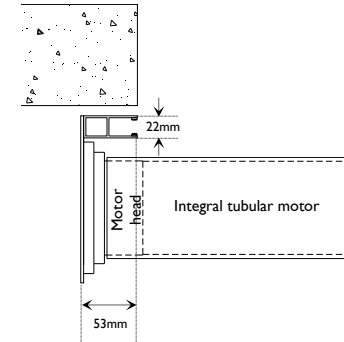
Styles A & B use the same materials, but style A has smaller apertures more suitable for bars and serveries.

Style C includes a solid bar within the rings. This not only reduces the aperture size but also increases the security strength.

Style D adds an additional solid steel bar between the rings to give the maximum security rating.

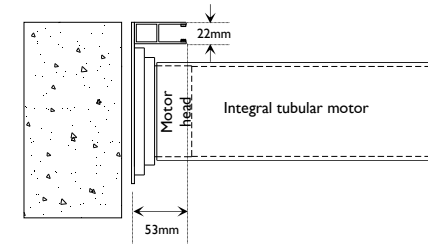


### Typical face fix arrangement



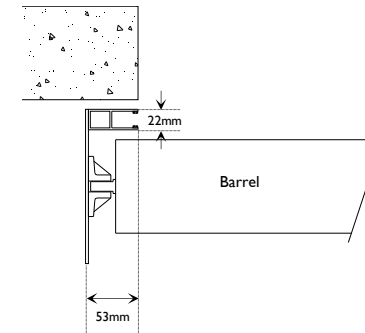
### Electric Operation

### Typical reveal fix arrangement

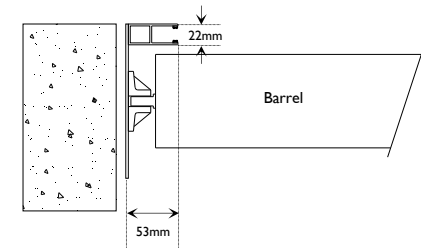


### Manual Operation

### Typical face fix arrangement



### Typical reveal fix arrangement



For shutter weights please visit [www.hvpshutters.co.uk](http://www.hvpshutters.co.uk) or contact HVP Security Shutters on 01392 270218

**HVP Security Shutters Ltd**

4 GRACE ROAD WEST, MARSH BARTON, EXETER, EX2 8PU  
Tel: 01392 270218 | Fax: 01392 278548 | Email: [info@hvpshutters.co.uk](mailto:info@hvpshutters.co.uk)

[www.hvpshutters.co.uk](http://www.hvpshutters.co.uk)  
Company Reg. No. 1406952